

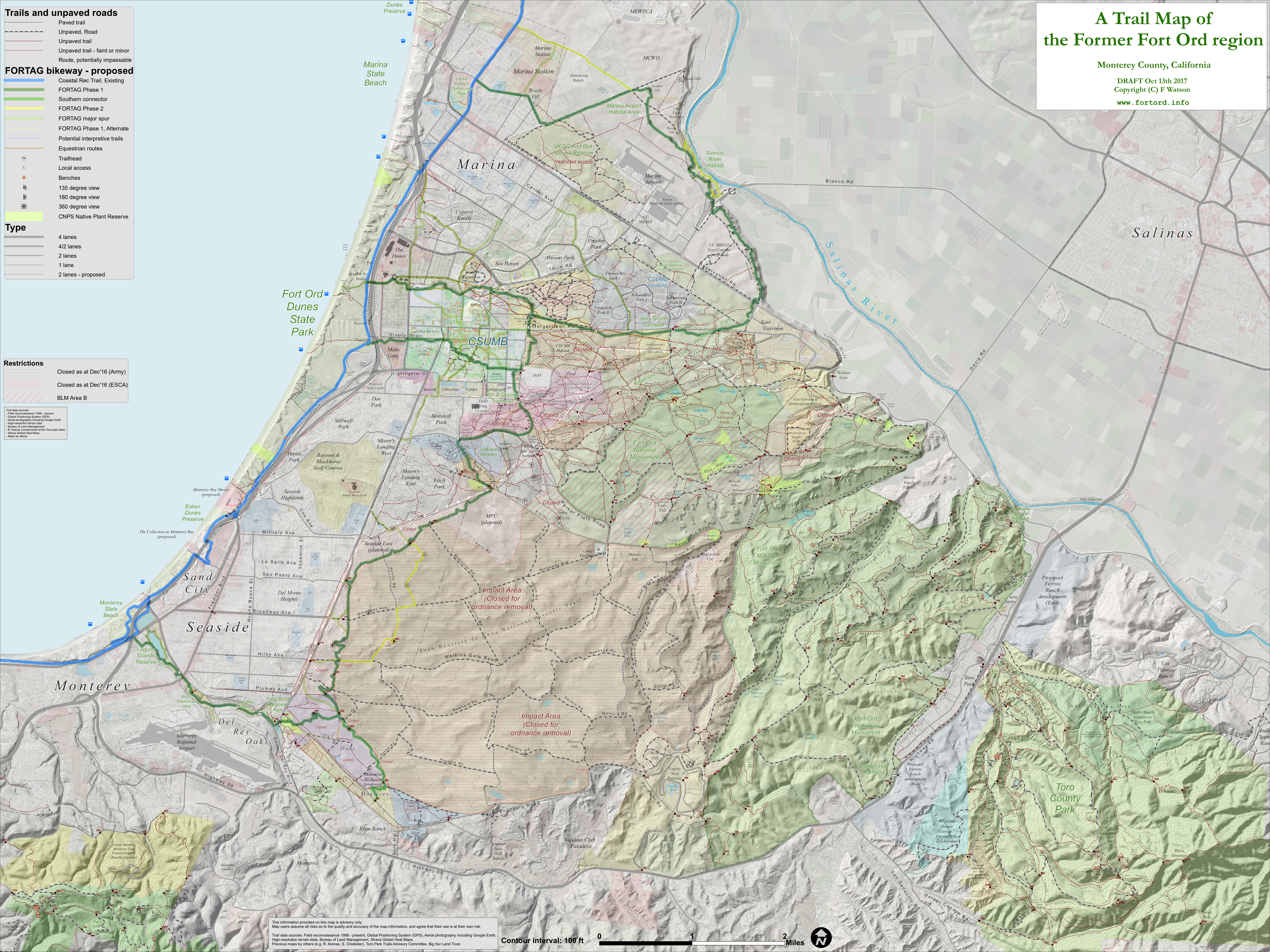
# A Trail Map of the Former Fort Ord region

Monterey County, California

DRAFT Oct 13th 2017

Copyright (C) F Watson

[www.fortord.info](http://www.fortord.info)



**Trails and unpaved roads**

- Paved trail
- Unpaved, Road
- Unpaved trail
- Unpaved trail - faint or minor
- Route, potentially impassible

**FORTAG bikeway - proposed**

- Coastal Rec Trail, Existing
- FORTAG Phase 1
- Southern connector
- FORTAG Phase 2
- FORTAG major spur
- FORTAG Phase 1, Alternate
- Potential interpretive trails
- Equestrian routes

**Type**

- Trailhead
- Local access
- Benches
- 135 degree view
- 180 degree view
- 360 degree view
- CNPS Native Plant Reserve

**Type**

- 4 lanes
- 4/2 lanes
- 2 lanes
- 1 lane
- 2 lanes - proposed

**Restrictions**

- Closed as at Dec'16 (Army)
- Closed as at Dec'16 (ESCA)
- BLM Area B

Trail data sources:  
 - Field reconnaissance 1998 - present  
 - Global Positioning System (GPS)  
 - Aerial photography including Google Earth  
 - High-resolution terrain data  
 - Bureau of Land Management  
 - R. Arenas (components of the Toro park data)  
 - Strava Global Heat Maps  
 - Maps by others

This information provided on this map is advisory only. Map users assume all risks as to the quality and accuracy of the map information, and agree that their use is at their own risk.  
 Trail data sources: Field reconnaissance 1998 - present, Global Positioning System (GPS), Aerial photography including Google Earth, High-resolution terrain data, Bureau of Land Management, Strava Global Heat Maps, Previous maps by others (e.g. R. Arenas, S. Chiseler), Toro Park Trails Advisory Committee, Big Sur Land Trust.

Contour interval: 100 ft 0 1 2 Miles